

Bluetooth for Traffic Signal Operations in Alaska

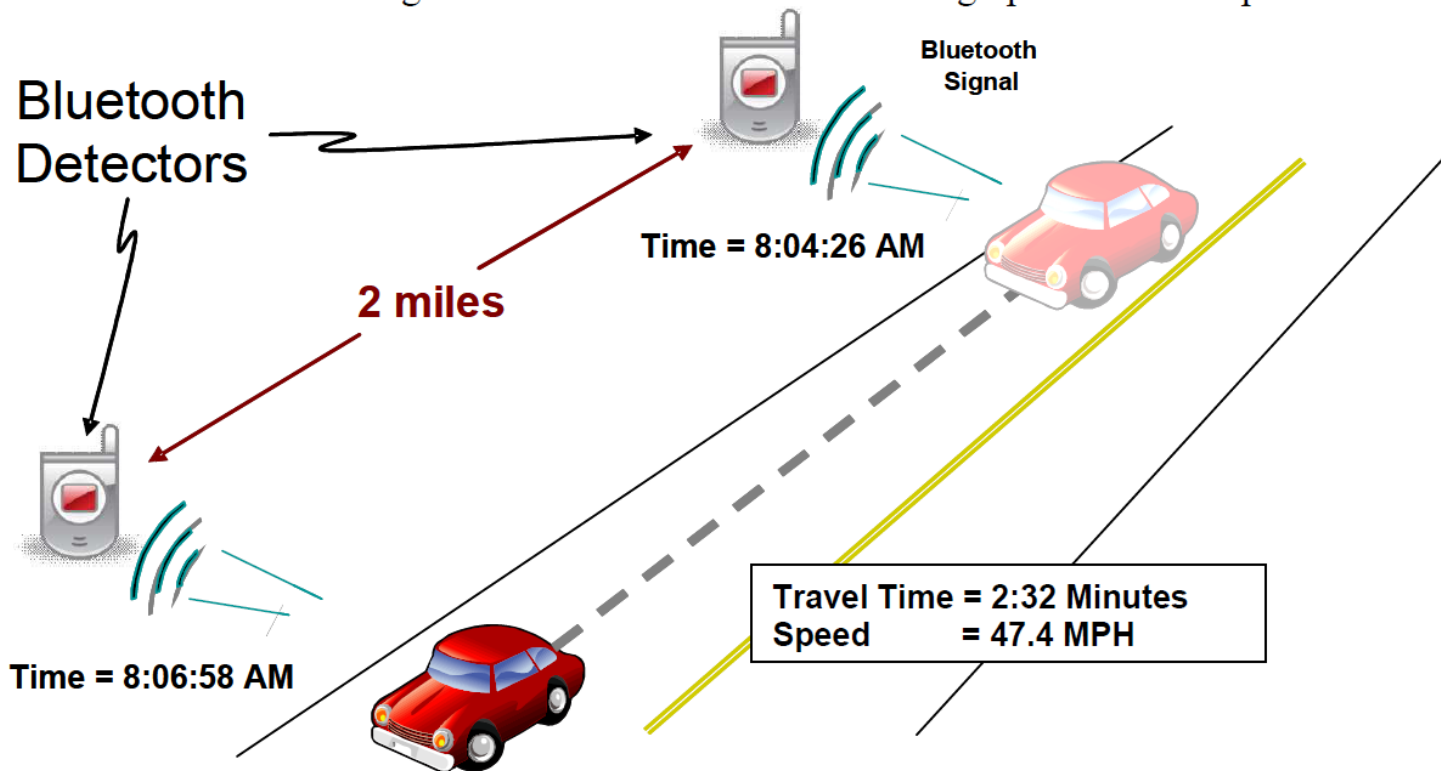
JEANNE M BOWIE

KINNEY ENGINEERING

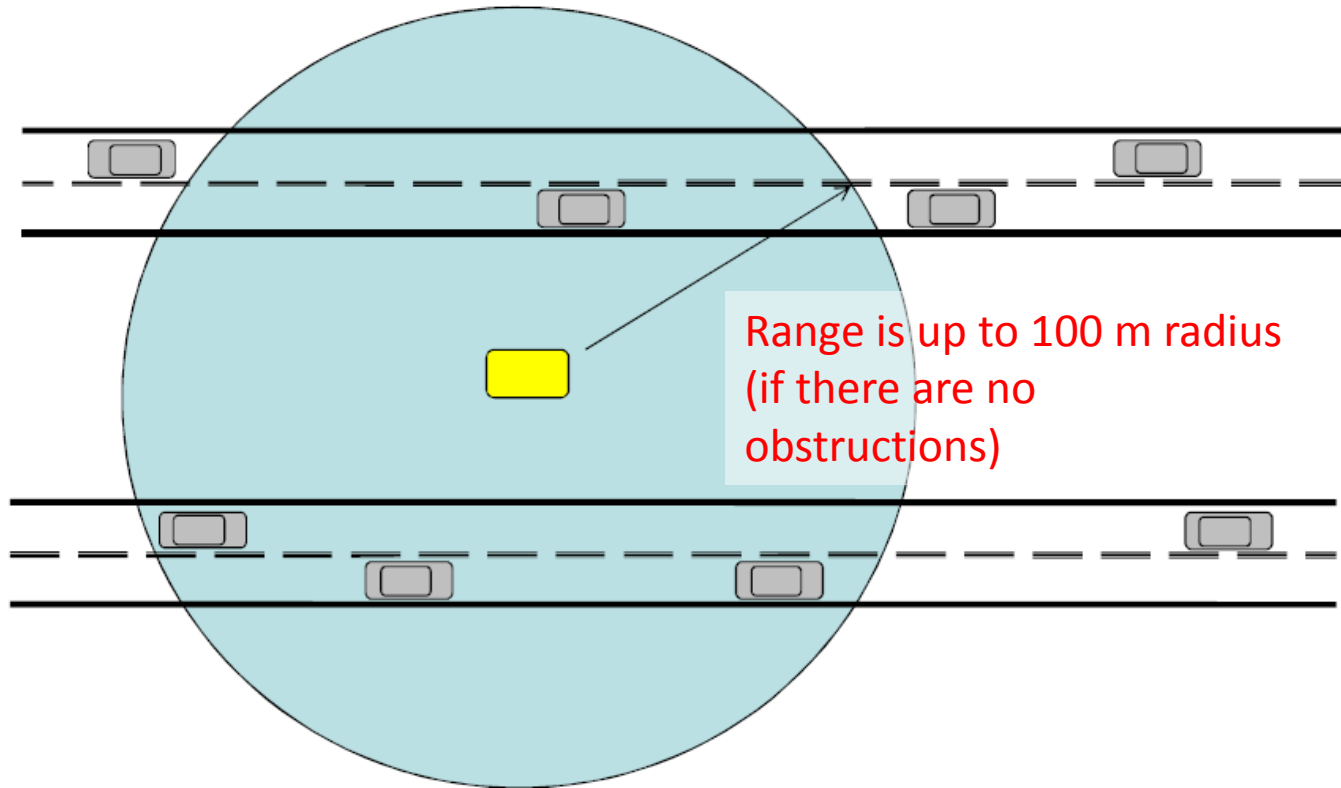
ITS ALASKA 2015 ANNUAL MEETING

-
- Practical aspects of deploying portable blue tooth machines
 - Data collection
 - Exploring the data

Bluetooth Concept



Zone of Detection



Deploying Portable Bluetooth

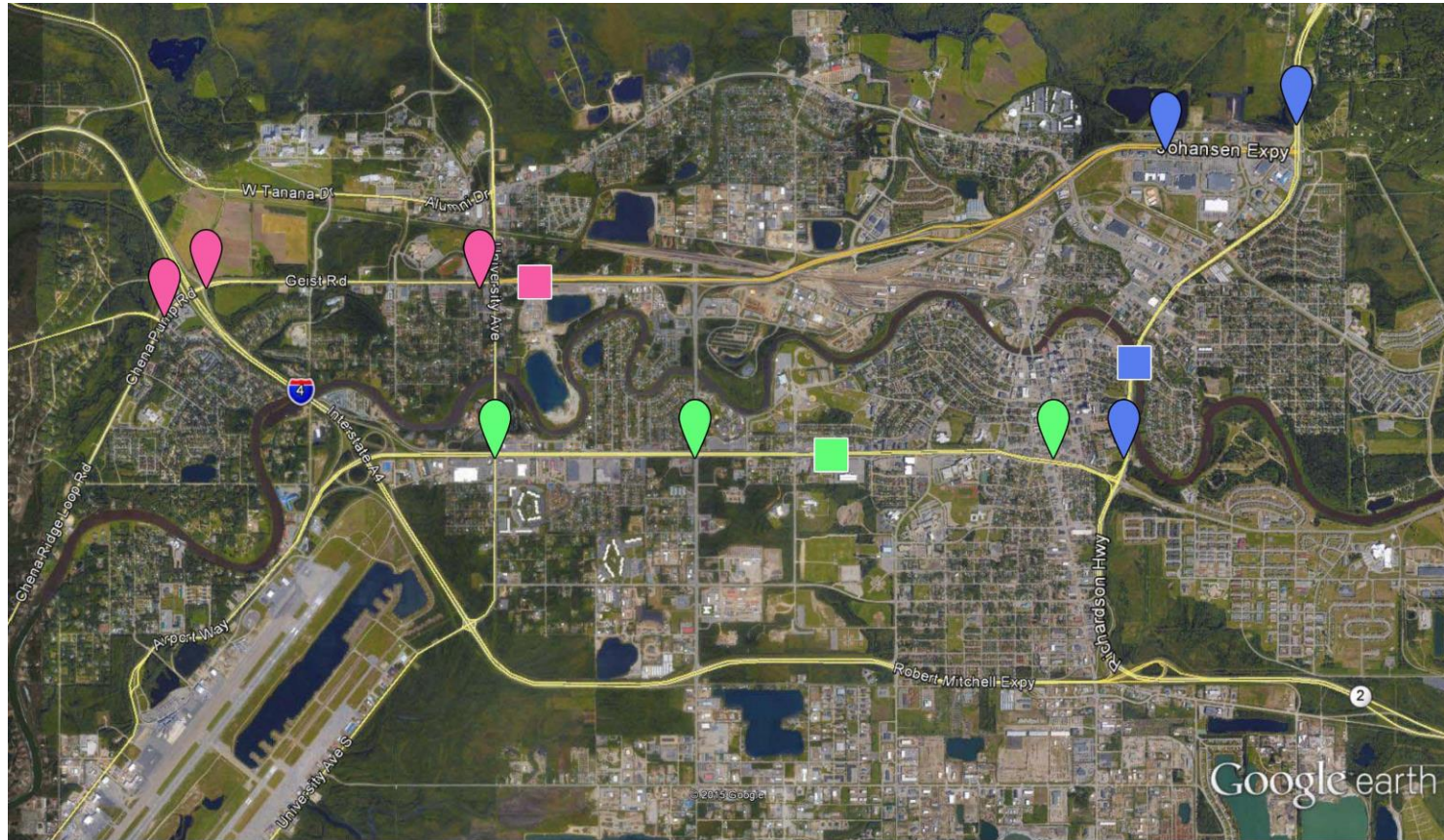


Attach to pole of sufficient size

Mount about 10 feet from road surface

Intersection or Segment?

Fairbanks Area Signal Coordination

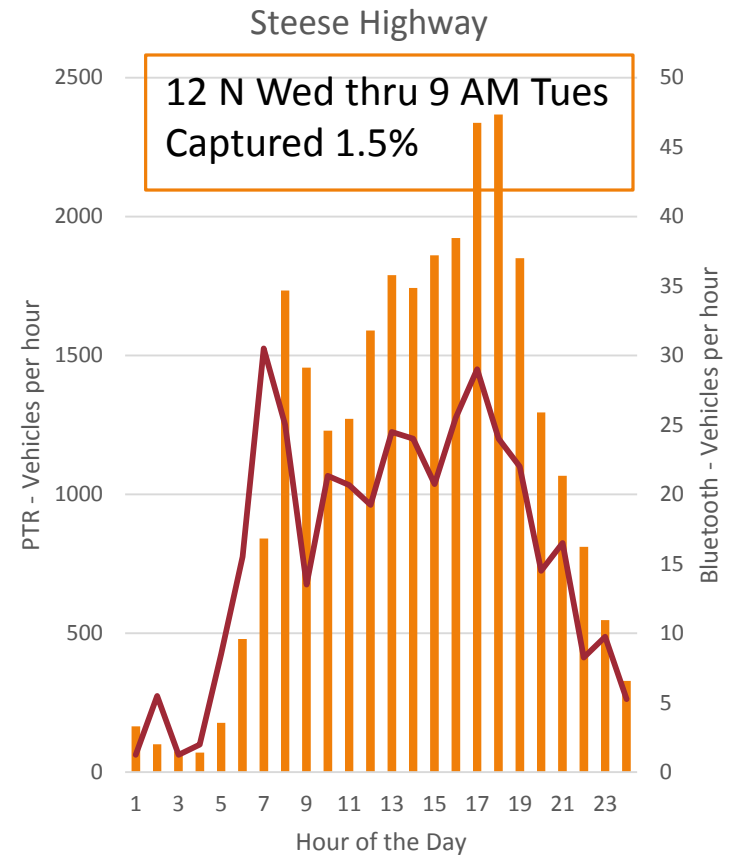
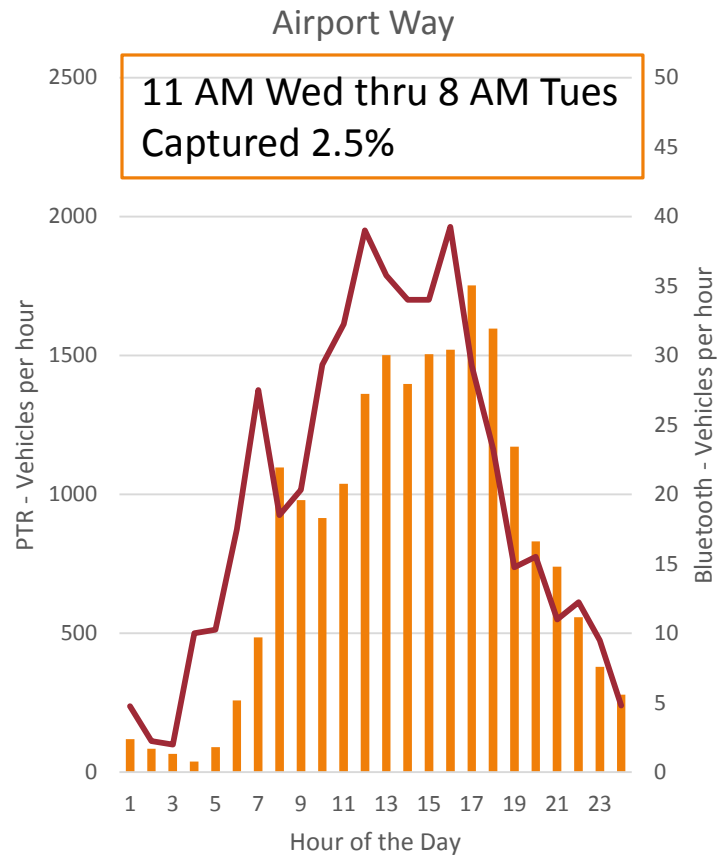


Google earth

miles
km

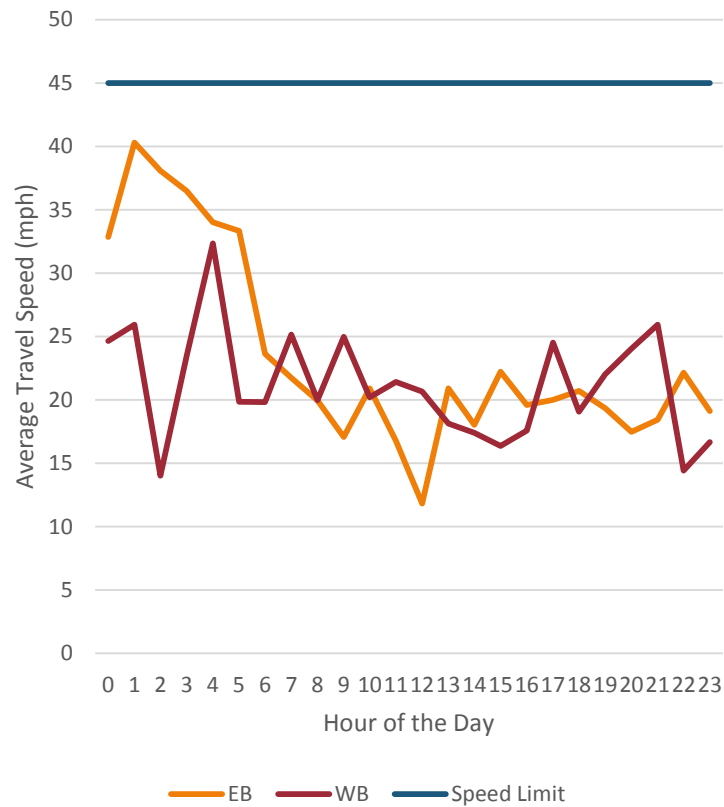


Data Collected

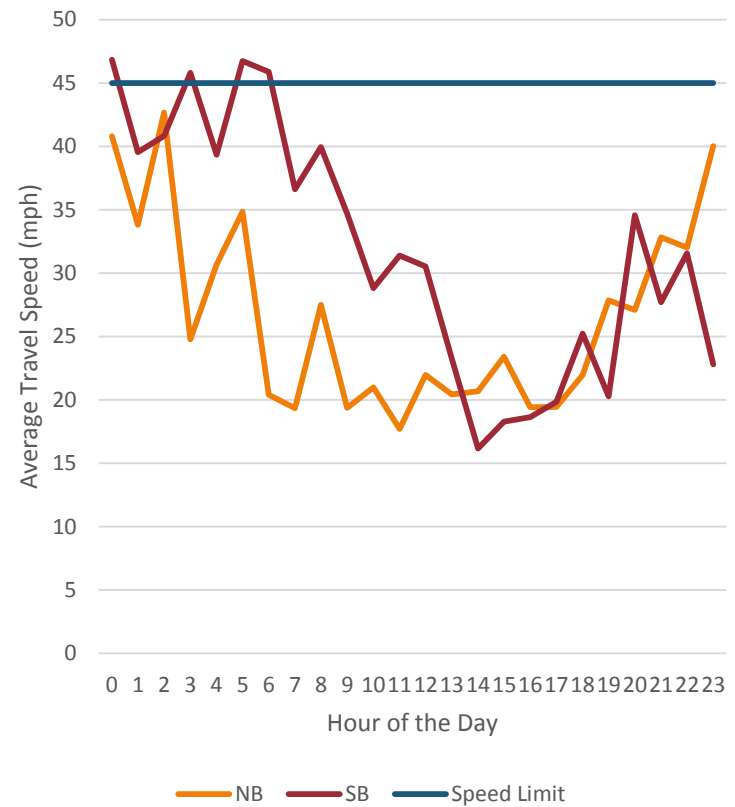


Travel Speed

Airport Way: Cushman to University

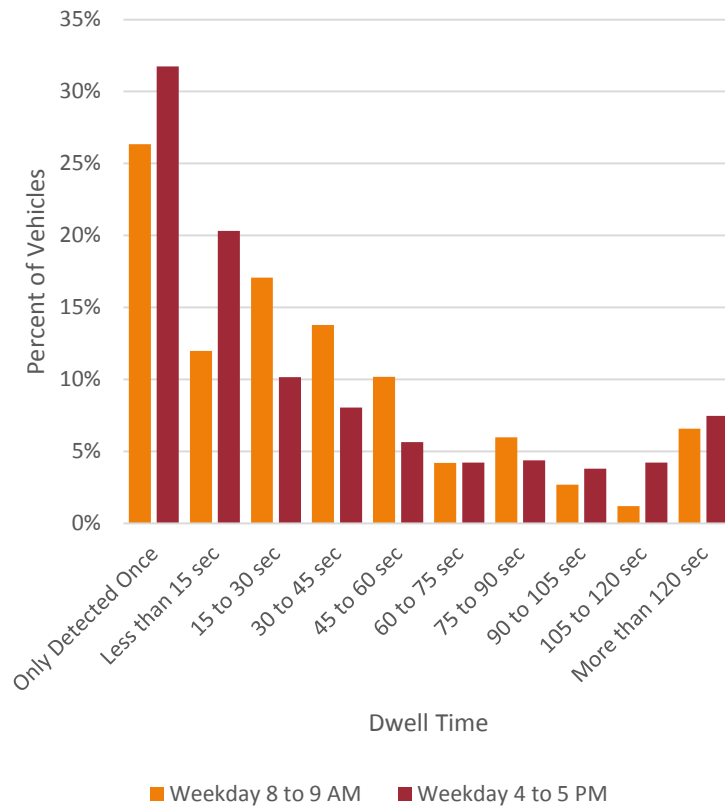


Steese Highway: Johansen to Airport

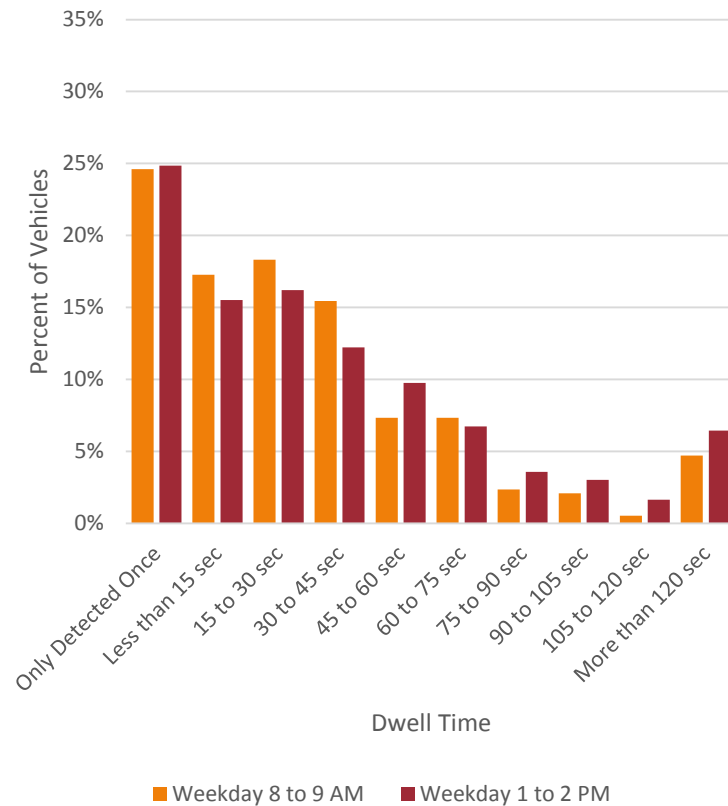


Dwell Time

Airport Way at University Avenue



Airport Way at Cushman Street



Thank You

